



The Mason



<https://beav.es/SSR>

Solitary Bees

Mason Bees

Genus: *Osmia*
(pronounced OZ-me-a)

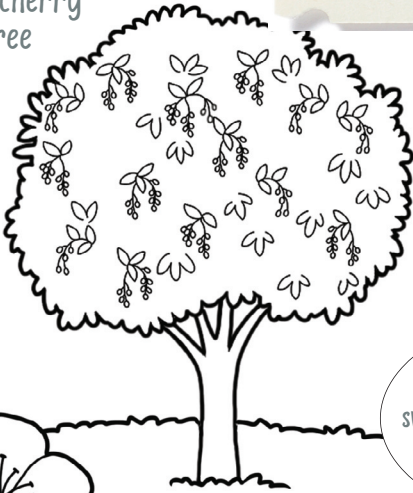


Mason Bee
6 to 12 mm in length

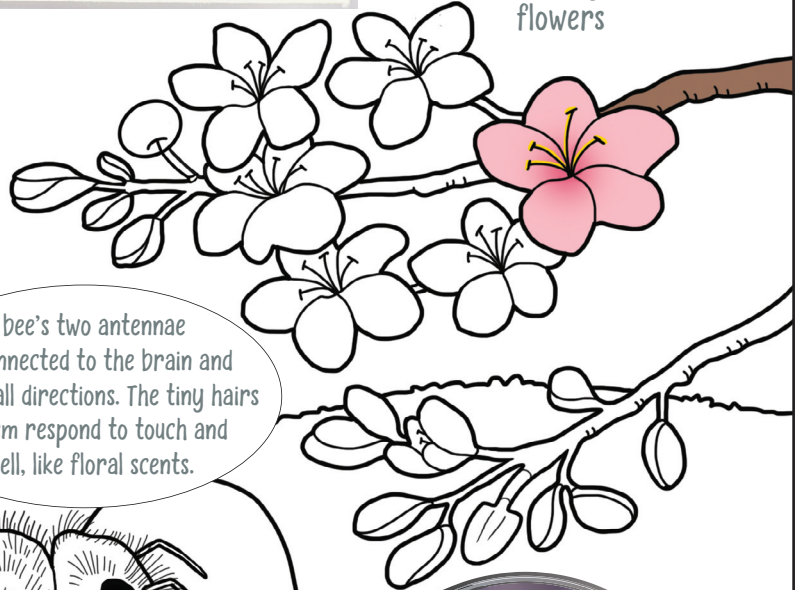


Color this page online at: <https://beav.es/c8p>

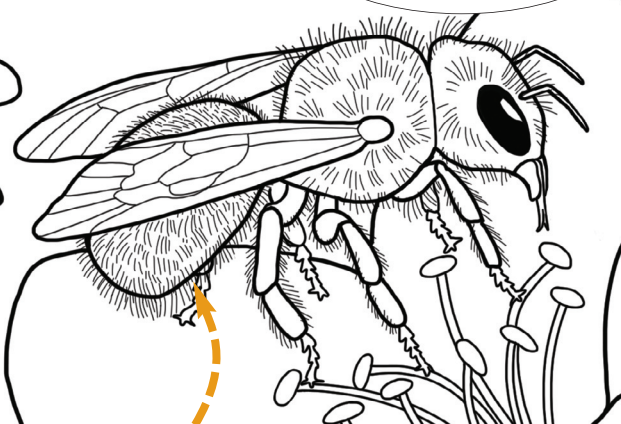
Chokecherry tree



Cherry flowers



A bee's two antennae are connected to the brain and swivel in all directions. The tiny hairs on them respond to touch and smell, like floral scents.



Mason bees carry pollen on special hairs on their abdomen and scopa.



Mason bee on sea blush

Chokecherries are a traditional food of Indigenous Peoples. They are not the same species as cherries; however, mason bees pollinate both.


- Find the hidden pictures!
-  Blueberry
 -  Cherry
 -  Trowel

Photo by Joe DiIugo

Field Notes:

Some **mason bees** are pollinators of almonds, apples, blueberries, camas, raspberries, **chokecherries** and cherries. These include some native plants. They are called mason bees because they use mud or clay to build their nests, just like a mason. A mason is someone who uses bricks and mortar to build homes and other buildings. They are small to medium-sized bees that are colored in bright metallic blues and greens and sometimes black. In Oregon, they are most often used to pollinate cherries. They work quickly. Under some conditions, a mason bee can pollinate three times as many flowers as a honey bee in the same amount of time.

 Does the mason bee remind you of another animal? A friend? Why?



A trait of this bee is that it is a fast pollinator.

Name a synonym and antonym for fast:
