

Take a Closer Look: Bee Parts and Plant Parts

Pretend you are smaller than a bee. What would the world look like to you?

1. Look at these close-up photos.
2. Guess what you're looking at.
3. Write down your guesses on the lines below the photos.
4. At the bottom of this page, discover what you were looking at!



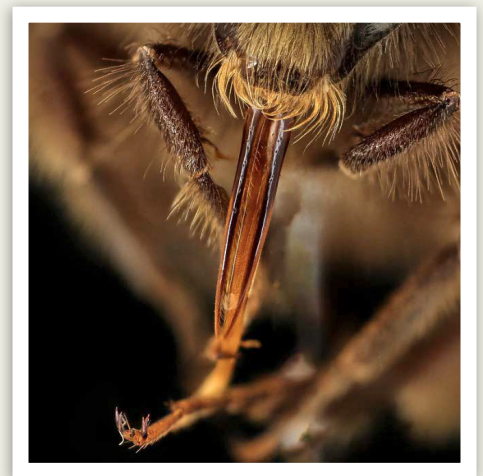
Blueberry Blossoms
and a Honey Bee



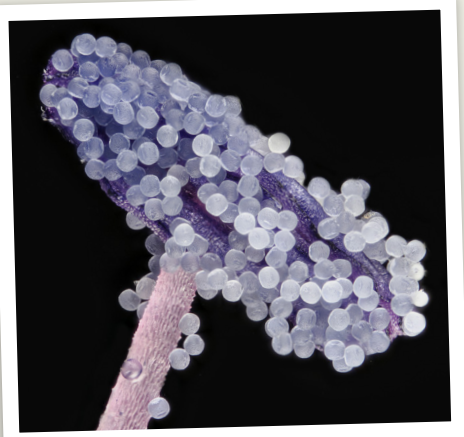
A. _____



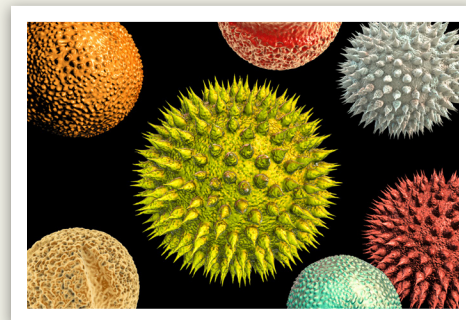
B. _____



C. _____



D. _____



E. _____



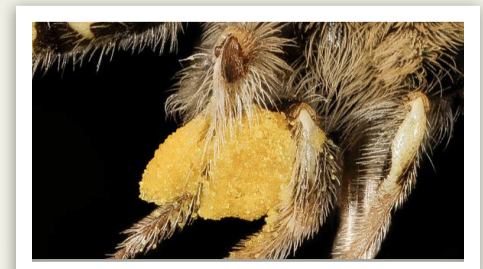
F. _____



G. _____



H. _____



I. _____

A. Bee antennae where they attach to the bee's head; **B.** Bee's compound eye; **C.** Bee tongue (proboscis); **D.** Pollen grains on an anther with the filament below; **E.** Pollen grains of different plants; **F.** Bee claw; **G.** Bee wing tip; **H.** A nemophila flower seen through a bee's eyes (in ultraviolet light); **I.** Loaded pollen basket of a foraging bee.

Images A, B, C, F, G and I courtesy of the United States Geological Service Bee Inventory and Monitoring Lab. Retrieved from <https://www.flickr.com/people/usgsbiml/>. Image H Svea Bruslind, Oregon State University.