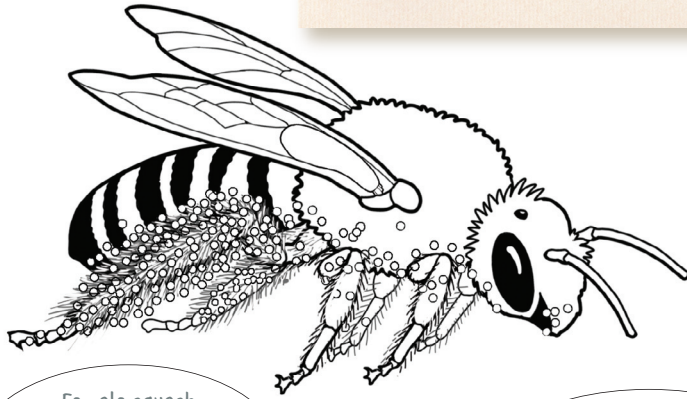




Solitary Bees
Squash Bees
 Genus: *Peponapis*
 (pronounced pep-on-A-pis)



Squash Bee
 11 to 14 mm in length



Female squash bees collect pollen on thick brushy **scopa** (hair) on their back legs.

Although other bees can pollinate squash plants, squash bees are some of the only bees that can fully digest squash pollen.

Color in the hidden pictures!



Zucchini



Gourd



Pumpkin



Field Notes:

Squash bees found in Oregon are medium-sized, fuzzy bees that feed only on the pollen of plants in the squash family (squashes, pumpkins and gourds). They spend their whole lives around the plants they pollinate. They nest in the ground beneath squash plants and even sleep inside squash blossoms. In fact, the best way to find squash bees is by looking inside squash blossoms in the cool of the morning when the bees are still asleep. Squash bees are new to Oregon and are still making their way around. Can you find squash bees in your community?

Why do you think the squash bee prefers squash as a favorite pollination target?



A trait of this bee is that it is fuzzy.

Name a synonym for fuzzy:
