

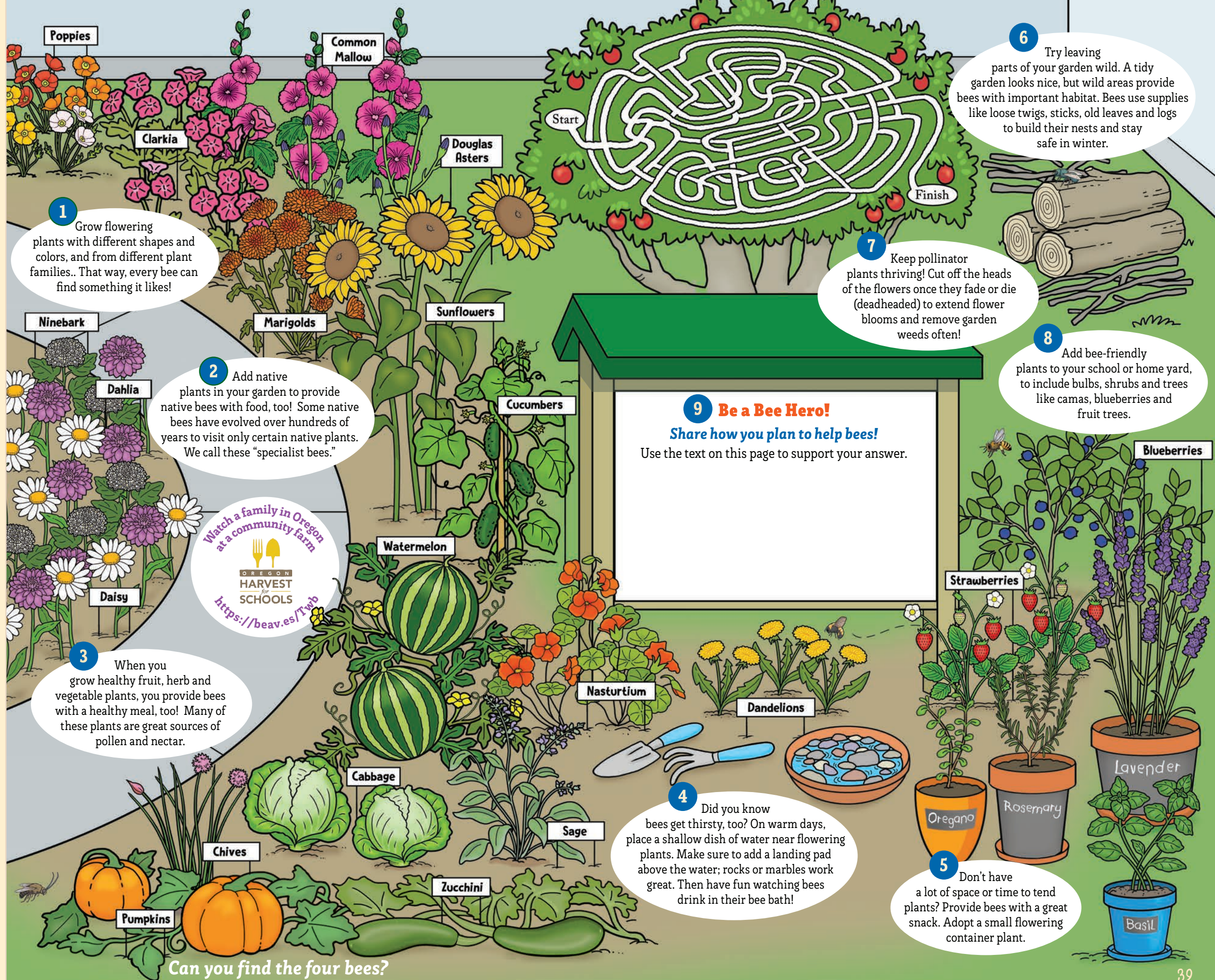
What You Can Do for Bees

A school pollinator garden habitat tour of ideas!

Some bees are active in the spring, some are active in the summer and some are active from early spring through fall. This page shows a garden growing in mid-June. By making sure there is always something in bloom, you can help provide food for them all! This is most important early in the spring and late in the fall when fewer plants are **in bloom** (blossoming).

Design a garden mural to help bring more visitors to the garden! Use what you have learned in this field guide to support your design.

What words or drawings did you add to your mural to attract people? Why did you choose them?



1 Grow flowering plants with different shapes and colors, and from different plant families.. That way, every bee can find something it likes!

2 Add native plants in your garden to provide native bees with food, too! Some native bees have evolved over hundreds of years to visit only certain native plants. We call these "specialist bees."

3 When you grow healthy fruit, herb and vegetable plants, you provide bees with a healthy meal, too! Many of these plants are great sources of pollen and nectar.

4 Did you know bees get thirsty, too? On warm days, place a shallow dish of water near flowering plants. Make sure to add a landing pad above the water; rocks or marbles work great. Then have fun watching bees drink in their bee bath!

5 Don't have a lot of space or time to tend plants? Provide bees with a great snack. Adopt a small flowering container plant.

7 Keep pollinator plants thriving! Cut off the heads of the flowers once they fade or die (deadheaded) to extend flower blooms and remove garden weeds often!

6 Try leaving parts of your garden wild. A tidy garden looks nice, but wild areas provide bees with important habitat. Bees use supplies like loose twigs, sticks, old leaves and logs to build their nests and stay safe in winter.

8 Add bee-friendly plants to your school or home yard, to include bulbs, shrubs and trees like camas, blueberries and fruit trees.

Can you find the four bees?