

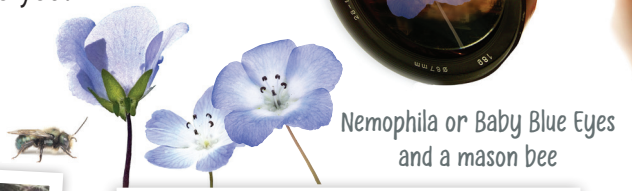
# Take a Closer Look: Bee Parts and Plant Parts

Photographers help scientists and all of us learn more about bees through their photos



Pretend you are smaller than a bee. What would the world look like to you?

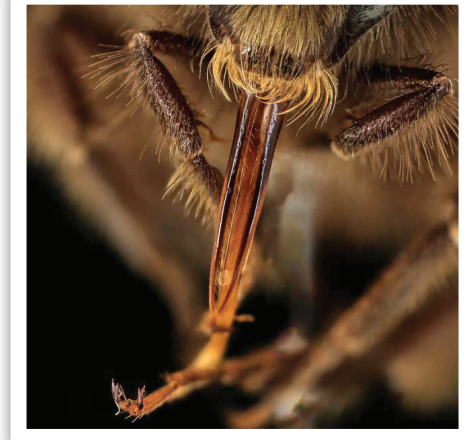
1. Look at these close-up photos.
2. Guess what you're looking at.
3. Write down your guesses on the lines below the photos.
4. At the bottom of this page, discover what you were looking at!



A. \_\_\_\_\_  
\_\_\_\_\_



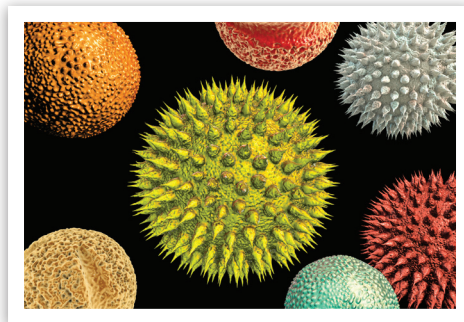
B. \_\_\_\_\_  
\_\_\_\_\_



C. \_\_\_\_\_  
\_\_\_\_\_



D. \_\_\_\_\_  
\_\_\_\_\_



E. \_\_\_\_\_  
\_\_\_\_\_



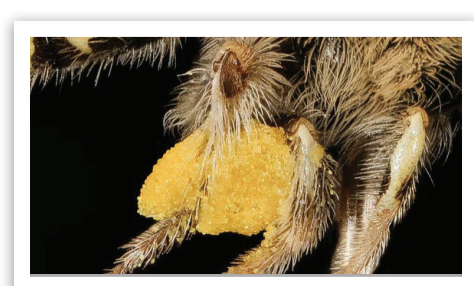
F. \_\_\_\_\_  
\_\_\_\_\_



G. \_\_\_\_\_  
\_\_\_\_\_



H. \_\_\_\_\_  
\_\_\_\_\_



I. \_\_\_\_\_  
\_\_\_\_\_

**A.** Bee antennae where they attach to the bee's head; **B.** Bee's compound eye; **C.** Bee tongue (proboscis); **D.** Pollen grains on an anther with the filament below; **E.** Pollen grains of different plants; **F.** Bee wing tip; **H.** A nemophila flower seen through a bee's eyes (in ultraviolet light) and through a human's eyes on the top of this page!; **I.** Loaded pollen basket of a foraging bee.

Images A, B, C, F, G and I courtesy of the United States Geological Service Bee Inventory and Monitoring Lab. Retrieved from <https://www.flickr.com/people/usgsbiml/>. Image H Svea Bruslind, Oregon State University.