

Field Notes:

Since *time immemorial*, Native Indigenous Peoples have been gathering wild strawberries and using the entire plant in different ways: to eat the fruit for food, fresh or dried; and to use other parts of the plant for medicines like teas and salves. Wild strawberries also provide nutrition for birds, bees, butterflies, deer and other animals. Several species of bees, including the mason, small carpenter, bumble and honey bees, visit strawberries and help pollinate them. Non-wild strawberries—meaning strawberries that are *domesticated* or *commercially farmed*—have been grown as crops in Oregon since the first plants were brought from Iowa in 1847 by settlers. Oregon is now the third-highest strawberry-producing state in the United States. Strawberries also grow well in containers and in the ground in home, school and community gardens across Oregon!

Some pollinators of strawberries



Time immemorial - long predating European contact and beyond human memory.



Seed-to-Food Life Cycle and More About Strawberries

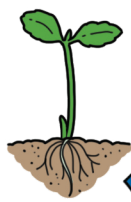
1 Seed

Inside of a seed is a plant that has not yet grown.

Germination

As seeds take in nutrients (like water and oxygen) in a friendly environment with the right temperature, many start to sprout into seedlings.

2



3 Seedling

A seedling has small plant parts (stem, leaves and roots), and needs sunlight or lamp light to grow

Plant

As the seedling takes in more nutrients in a friendly environment, it grows bigger and stronger and becomes a plant.

4



Although strawberries can self-pollinate with the help of wind, bees help spread the pollen around the flower, which makes a larger and juicier fruit. Here's how: If you look closely at a strawberry, you'll see tiny black seeds all over the surface. The more of them that get pollinated, the bigger the fruit.

5



Flowers

Flowers bloom on the plant and are pollinated by bees, other animals, the wind or people.

6

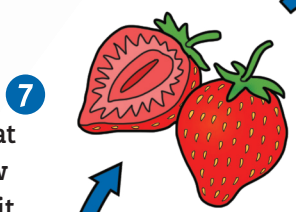
Fruit

After pollination, fruit begins to grow.



Harvest

Fruit has seeds that can grow into new plants and the fruit can be harvested to eat and put in recipes like



7



Jocelyn is building a model from her garden of how a seed turns into food with the help of bees. 1. Add more flowers to the plant in step 5. 2. Add bees that like to pollinate those flowers. 3. Label plant parts. 4. In step 7 add a favorite strawberry recipe in the blank.

Jocelyn is in the science fair. Help Jocelyn finish her project!