

Take a Closer Look: Bee Parts *and* Plant Parts

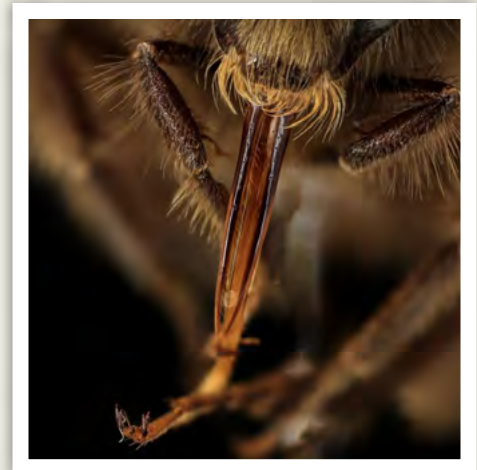
Pretend you are smaller than a bee. What would the world look like to you? **1.** Look at these close-up photos. **2.** Guess what you're looking at. **3.** Write down your guesses on the lines below the photos. **4.** At the bottom of this page, discover what you were looking at!



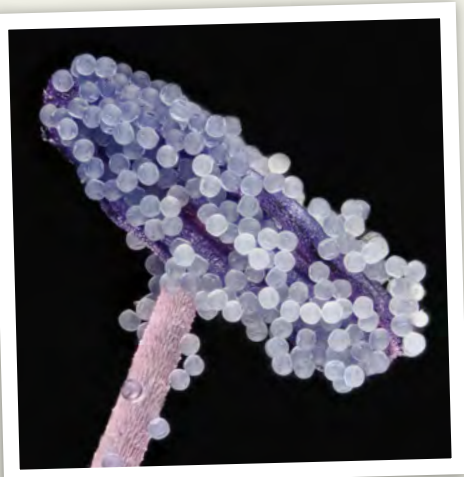
A.



B.



C.



D.



E.



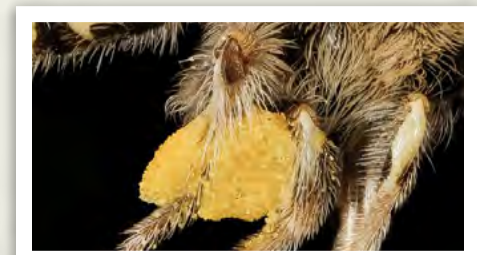
F.



G.



H.



I.

A. Bee antennae where they attach to the bee's head; **B.** Bee's compound eye; **C.** Bee tongue (proboscis); **D.** Pollen grains on an anther with the filament below; **E.** Pollen grains of different plants; **F.** Bee claw; **G.** Bee wing tip; **H.** A flower seen through a bee's eyes (in ultraviolet light); **I.** Loaded pollen basket of a foraging bee.

Images A, B, C, F, G and I courtesy of the United States Geological Service Bee Inventory and Monitoring Lab. Retrieved from <https://www.flickr.com/people/usgsbiml/>. Image H Svea Bruslind, Oregon State University.