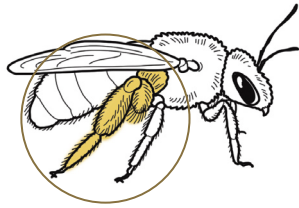


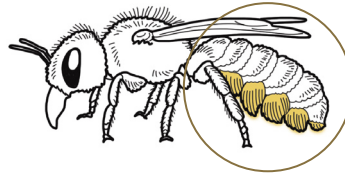
Three Different Types of Pollen-Carrying Structures:



- 1 **Corbicula**
(pollen basket)
Honey bee



- 2 **Scopa** (hairs
on back leg)
Mining bee



- 3 **Scopa** (hairs beneath
the abdomen)
Leafcutter bee



Bumble bee with pollen in a corbicula

Bees Make Healthy Food Acrostic Poem

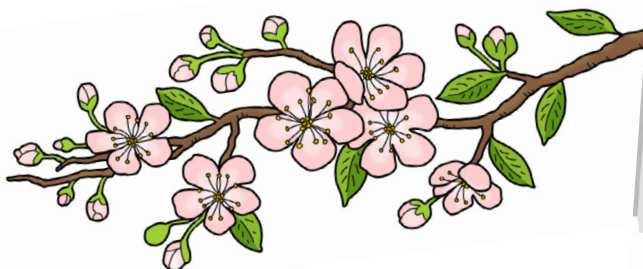
What is it? An **acrostic** is a poem in which the first letter of each line spells out a word. Often, that word is the title of the poem. Here's an example:

Cherry

- C**ool-weather blossoms
Helped to grow by mason bees
Eat cherries fresh or in fruit salad or parfait!
Ruby red
Ripe in midsummer
You can't eat just one!

Your Turn!

Try writing an acrostic poem about your favorite fruit or vegetable that bees help make! First write your title, in large letters, one letter at a time in the blocks on the side of the page. Use as many blocks as you need. Now write something you like about your fruit or vegetable or the bee that helps make it that begins with the letter at the start of each line. Find someone to read your poem to!



The notebook page features a vertical column of ten colored boxes on the left side, each corresponding to a line of the acrostic poem. The colors from top to bottom are: light orange, light blue, light green, light purple, light yellow, light pink, light teal, light blue, light orange, and light purple. To the right of these boxes are ten horizontal lines for writing the poem's content.