



Haiku

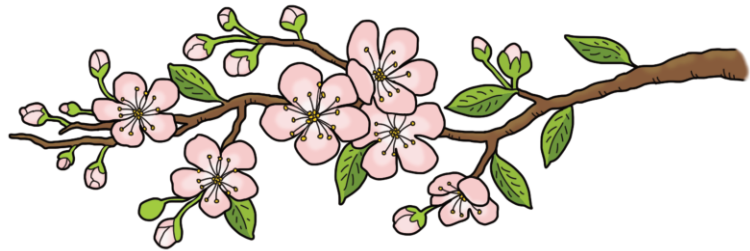
Food Hero
Poetry
Workshop

What is it?

A **haiku** is a poem with three lines. It was invented in Japan. Usually, it is about nature. It always has 17 syllables. A syllable is a sound that you say separately. The word bee has only one syllable. The word springtime has two. The first and third lines of a haiku each have five syllables, and the middle line has seven syllables: 5 + 7 + 5 = 17. Here's an example:

Apple Tree

In springtime, it blooms.
Bees and blossoms make apples.
In fall, we make pie!



Your Turn!

Try writing a haiku about how food grows. It can describe a farm, a garden, or any fruit or vegetable you like. Try a raspberry bush, cornstalks, or a pumpkin patch! Or describe how honeybees, rain, or sunshine help foods grow!

First give your poem a title. Write your name below it. Then write three things about your subject, one on each line. Count your syllables!

We would love to read your poem!

If you'd like to share it with us, send an email to food.hero@oregonstate.edu and we will tell you how!

Title: _____

By: _____

_____ [5 syllables]

_____ [7 syllables]

_____ [5 syllables]



This material was funded by USDA's Supplemental Nutrition Assistance Program (SNAP). SNAP provides nutrition assistance to people with low income. SNAP can help you buy nutritious foods for a better diet. To find out more, contact Oregon Safe Net at 211. USDA is an equal opportunity provider and employer. 2020 Oregon State University Extension Service prohibits discrimination in all its programs, services, activities, and materials on the basis of race, color, national origin, religion, sex, gender identity (including gender expression), sexual orientation, disability, age, marital status, familial/parental status, income derived from a public assistance program, political beliefs, genetic information, veteran's status, reprisal or retaliation for prior civil rights activity. (Not all prohibited bases apply to all programs.) Oregon State University, Oregon State University Extension Service is an Equal Opportunity Provider and Employer.

Share on:

