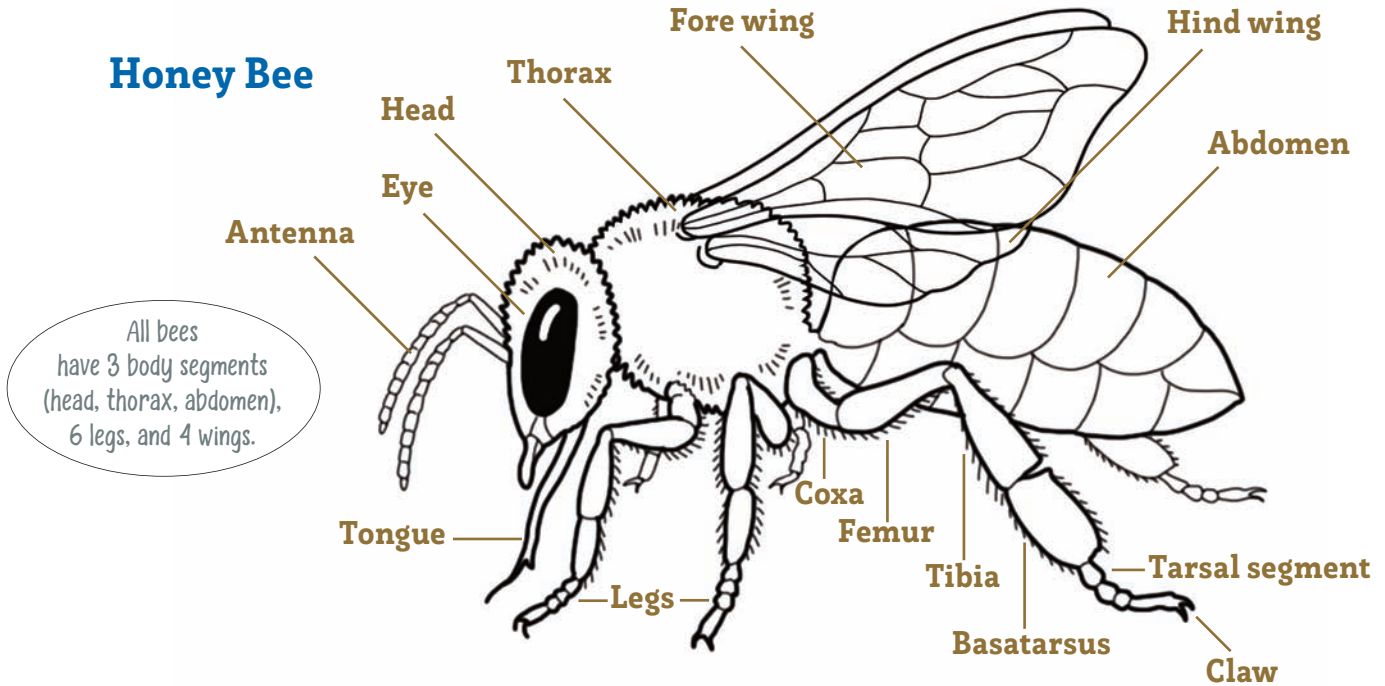


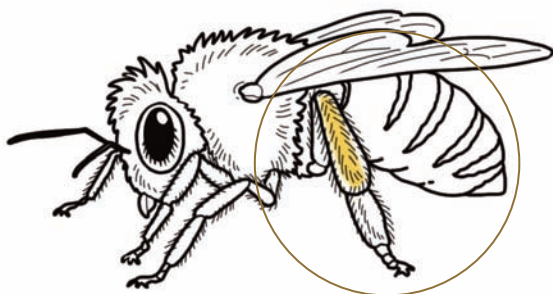
Parts of a Bee

In Oregon there are over 600 unique types of bees. Each type of bee is called a **species**. Scientists who study bees use the parts of a bee to identify them. To help understand how alike or different they are, scientists put similar species together into a group called a **genus**. In this book, you learned about a few of the most common **genera** (plural of genus) in Oregon.

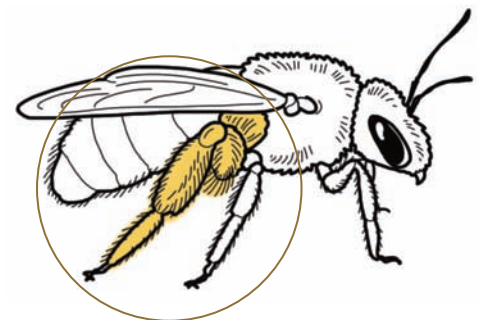
Honey Bee



Three Different Types of Pollen-Carrying Structures:



1 **Corbicula (pollen basket)**
Honey bee



2 **Scopa (hairs on back leg)**
Mining bee

3 **Scopa (hairs beneath the abdomen)**
Leafcutter bee

