



Oregon State University  
Extension Service  
Master Gardener™

## Growing in Oregon

# Zinnias

## Quick Garden Tips

- 1 Zinnias grow best when you plant the seeds right in your garden soil, just about 1/4-inch deep. Zinnia seeds are large, which make them a good choice for children to plant.
- 2 Thinning the seedlings increases airflow between plants and helps prevent powdery mildew later in the summer.
- 3 Zinnias are considered annuals, meaning they will not return the next spring. But if you live in USDA hardiness zone 9 to 11, you can enjoy zinnias year round. If not, try growing smaller varieties in containers and bringing them indoors before the first frost.
- 4 Different varieties of zinnias can grow from 6 inches to 3 feet tall. When planning your garden, be sure the zinnias do not block sunlight for other plants.



### Season and Location



- ✿ Zinnias are from Central America. They like direct sunlight and cannot survive frost.
- ✿ Zinnias grow best when the daytime temperature stays above 60°F. They may then produce flowers throughout the entire summer.

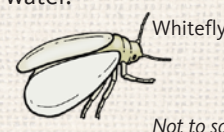
### Pollinator Notes



- ✿ There are many different sizes and colors of zinnias. The most attractive flowers will be visited by many pollinators such as butterflies, hummingbirds and bees.
- ✿ Oregon State University scientists have noticed that male bumblebees out late in the day will sometimes spend the night nestled between zinnia petals.

### Key Pests and Diseases

- ✿ Diseases include powdery mildew: water early in the day, and allow enough space between plants for airflow.
- ✿ Insect pests include aphids and whiteflies. They can be washed off with water.



Whitefly  
Not to scale



Aphid

### Oregon Gardening Calendar for Zinnias

Zinnias look great in floral displays and are great to share. The more you harvest them, the more they will keep blooming.

Central/Eastern



Willamette Valley



Coast



JAN FEB MAR APR MAY JUN JUL AUG SEP OCT NOV DEC JAN

🌱 Plant seeds    🌸 Harvest flowers